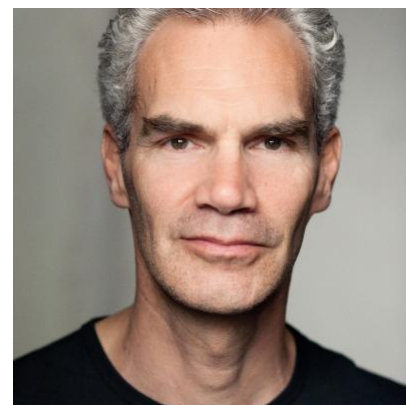


Angus Wright

Please see Angus' showreel [here](#)

password: united



Agents

Ruth Young

Associate Agent
Phoebe Trousdell
ptrousdell@unitedagents.co.uk
+44 (0)20 3214 0800

Second Assistant
Lauren Morgan
lmorgan@unitedagents.co.uk
+44 (0)20 3214 0800

Maternity Cover Assistant
Alex Campbell
acampbell@unitedagents.co.uk
+44 (0)20 3214 0800

Associate Agent (On Maternity Leave)
Zoe Bone

Roles

Film

| Production | Character | Director | Company |
|----------------------------|--------------------|------------------|-----------------------|
| OFFICIAL SECRETS | Mark Ellison | Gavin Hood | Classified Films |
| THE LITTLE STRANGER | Coroner Riddell | Lenny Abrahamson | Potboiler Productions |
| THE RABBITS FOOT | 'Lucky' Francis | | STRANGE LIGHTNING LTD |
| ROGUE ONE | Hammerhead Captain | Gareth Edwards | Lucasfilm |
| A LITTLE CHAOS | SuaLEM | Alan Rickman | Potboiler Films |

| Production | Character | Director | Company |
|-------------------------------|-----------------------|-------------------|-------------------------------------|
| JACK RYAN | Tall Man | Kenneth Branagh | August Street Films |
| MALEFICENT | Advisor to King Henry | Robert Stromberg | Briar Rose Productions Ltd |
| CLOSED CIRCUIT | Andrew Altman | John Crowley | Belmont Productions Limited |
| PRIVATE PEACEFUL | Captain Barnes | Pat O'Connor | Private Peaceful Productions PLC |
| THE IRON LADY | John Nott | Phyllida Lloyd | Pathe |
| AFFAIR OF THE NECKLACE | Henri Sanson | Charles Shyer | Necklace Productions |
| BRIDGET JONES'S DIARY | Literary Figure | Sharon Maguire | BJD Productions |
| CHARLOTTE GRAY | Agent | Gillian Armstrong | Ecosse Films |
| CUTTHROAT ISLAND | Captain Trotter | Renny Harlin | Carolco |
| DR SLEEP | Trainers Man | Nick Willing | BBC Films |
| FIRST KNIGHT | Marauder | Jerry Zucker | First Knight Productions |
| FRANKENSTEIN | Guard | Kenneth Branagh | Shelley Films |
| JILTING JOE | Mick | Dan Zeff | Warner Sisters |
| KINGDOM OF HEAVEN | Richard's Knight | Ridley Scott | 20th Century Fox |
| LABYRINTH | Commander Levien | Lorne Thyssen | Lupo Films |
| NICHOLAS NICKLEBY | Mr Pluck | Doug McGrath | Nicholas Nickleby Ltd |
| RKO 281 | Joseph Cotten | Ben Ross | HBO/BBC |
| THE BANK JOB | Robert Rowlands | Roger Donaldson | Skyline (Baker Street) Ltd / Miriad |
| THE LOVER'S PRAYER | Boris | Reverge Anselmo | Seven Hills Productions |
| THE WHIPPING BOY | Cavalry Officer | Syd McCartney | Gemini Films |

Television

| Production | Character | Director | Company |
|---------------------------------------|-----------------------|--------------------|-----------------------|
| THE CROWN SERIES 3 | Martin Furnival Jones | Benjamin Caron | Netflix |
| THE YEAR OF THE RABBIT (PILOT) | Linley | Ben Taylor | Objective Fiction |
| PLEBS 4 | Evander | Sam Leifer | Rise Films |
| MIDSOMER MURDERS | Roderick Craven | Nicholas Laughland | Bentley Productions |
| FLOWERS | George | Will Sharpe | Kudos Film and TV Ltd |
| PEEP SHOW | Angus | Becky Martin | Objective Productions |

| Production | Character | Director | Company |
|--|-------------------------|-----------------------|---------------------------------|
| JEKYLL AND HYDE | Gabriel Utterson | Colin Teague | ITV J&H LTD |
| Father Brown, Series 3 | Colonel James St Clare | Ian Barber | BBC |
| SONS OF LIBERTY | Clinton | Kari Skogland | A&E Studios for History Channel |
| BREATHLESS | Major Domo | Paul Unwin | ITV Studios Ltd |
| MURDER ON THE HOME FRONT | Carver | Geoff Sax | Carnival |
| BEING HUMAN SERIES 4 | Dr North | Daniel O'Hara | Touchpaper TV |
| THE SARAH JANE ADVENTURES | Mr Dread | Joss Agnew | DW Productions Ltd |
| ABOVE SUSPICION | Parks | Chris Menaul | La Plante Productions |
| ATTACHMENTS | Ed Viner | Harry Bradbeer | Carlton UK |
| BETWEEN THE LINES | Motorcycle Officer | Bob Bierman | BBC |
| BOUDICA | Severus | Bill Anderson | Box TV |
| BRILLIANT | Marc Miller | David Jackson | Native/BBC 10 x 10 |
| CAMBRIDGE SPIES | Guy Liddell | Tim Fywell | BBC |
| CASANOVA | | Sheree Folkson | Red Productions |
| CROCODILE SHOES | Alan McGuire | David Richards | Red Rooster Films |
| DALZIEL & PASCOE | Greg Waterson | Maurice Phillips | BBC |
| DUCK PATROL | Policeman | Sylvie Boden | LWT |
| HOTEL BABYLON | Francis Levington | Paul Whittington | Carnival |
| PIE IN THE SKY | PC | Lawrence Gordon Clark | SelecTV |
| SOLDIER SOLDIER | Police Constable | Douglas Mackinnon | Carlton UK |
| THE BILL | Chief Inspector Wallace | Jeremy Silberston | Thames TV |
| THE PAINTED LADY | Charles Stafford | Julian Jarrold | Granada |
| THE SHOOTING OF THOMAS HURNDALL | Sherard Cowper-Coles | Rowan Joffe | Talkback Thames for Channel 4 |
| THE VICE | Defence Council | Julian Holmes | Carlton |
| THE WAY WE LIVE NOW | Miles Grendall | David Yates | BBC |
| WAKING THE DEAD | Stephen Carson | Tim Fywell | BBC |
| WHISTLEBLOWER | Sutton | Ben Bolt | BBC |
| WINTER SOLSTICE | Peter | Martyn Friend | Own Two Feet Productions |
| WIRE IN THE BLOOD | Mr Willerton | Terry McDonagh | Coastal Productions |

Stage

| Production | Character | Director | Company |
|--------------------------------------|---|--|--|
| THE PRIME OF MISS JEAN BRODIE | Gordon Lowther | Polly Findlay | Donmar Warehouse |
| HAMLET (West End) | Claudius | Robert Icke | The Harold Pinter Theatre/ATG |
| HAMLET 1984 | Claudius O'Brien | Robert Icke | Almeida Playhouse Theatre |
| ORESTEIA | Agamemnon | Robert Icke, Duncan Macmillan and Daniel Raggett | The Almeida Theatre |
| ORESTEIA - Trafalgar Studios | Agamemnon | Robert Icke | ATG |
| THE CHERRY ORCHARD | Leonid Gaev | Katie Mitchell | Young Vic |
| TWELFTH NIGHT/RICHARD III | Sir Andrew Aguecheek/Duke of Buckingham | Tim Carroll | The Globe on Broadway |
| PRIVATES ON PARADE | Giles Flack | Michael Grandage | Michael Grandage Company |
| THE MASTER AND MARGARITA | Koroviev | Simon McBurney | Complicite |
| THE CAT IN THE HAT | The Cat | Katie Mitchell | National Theatre, Young Vic and Theatre de la Ville, Paris |
| WASTWATER | Jonathan | Katie Mitchell | Royal Court Theatre |
| DESIGN FOR LIVING | Ernest Friedman | Anthony Page | Old Vic Theatre |
| MRS AFFLECK | Alfred Affleck | Marianne Elliott | National Theatre |
| THE TRAGEDY OF THOMAS HOBBS | Rotten | Elizabeth Freestone | Royal Shakespeare Company |
| MERCHANT OF VENICE | Shylock | Tim Carroll | Royal Shakespeare Company |
| WAR HORSE | Hauptmann Friedrich Muller | Marianne Elliott and Tom Morris | National Theatre |
| ST JOAN | Warwick | Marianne Elliott | National Theatre |
| THE SEAGULL | Dorn | Katie Mitchell | National Theatre |
| MEASURE FOR MEASURE | Angelo | Simon McBurney | Complicite |
| A DREAM PLAY | The Dreamer | Katie Mitchell | National Theatre |

| Production | Character | Director | Company |
|--|------------------------------|--------------------|-----------------------------|
| STUFF HAPPENS | Journalist/Sir David Manning | Nicholas Hytner | National Theatre |
| MEASURE FOR MEASURE | Provost | Simon McBurney | National Theatre |
| THREE SISTERS | Kulygin | Katie Mitchell | National Theatre |
| TWELFTH NIGHT | Sir Andrew Aguecheek | Tim Carroll | The Globe Theatre |
| THREE SISTERS | Baron Tusenbach | Loveday Ingram | Chichester Festival Theatre |
| THE IMPORTANCE OF BEING EARNEST | Algernon | Selina Cadell | Nottingham Playhouse |
| TALK OF THE CITY | Clive | Stephen Poliakoff | RSC |
| CHIPS WITH EVERYTHING | Pilot Officer | Howard Davies | Royal National Theatre |
| A MIDSUMMER NIGHT'S DREAM | Lysander | Jonathan Miller | Almeida Theatre |
| THE RIVALS | Faulkland | Selina Cadell | National Theatre Studio |
| EARLY MORNING | Prince Albert | Philip Franks | National Theatre Studio |
| MOTHER COURAGE | The Lieutenant | Jonathan Kent | Royal National Theatre |
| A MONGREL'S HEART | Bormenthal | Mark Wing-Davey | Royal Lyceum, Edinburgh |
| SALOME | John the Baptist | Stephen Berkoff | European tour |
| PRIVATE LIVES | Victor | Kenny Ireland | Royal Lyceum, Edinburgh |
| HAMLET | Guildenstern | Adrian Noble | RSC |
| THE THEBAN PLAYS | Chorus | Adrian Noble | RSC |
| THE DYBBUK | Batlon | Katie Mitchell | RSC |
| HENRY IV I&II | Douglas / Bullcalf | Adrian Noble | RSC |
| TWELFTH NIGHT | 2nd Officer | Griff Rhys Jones | RSC |
| TOO CLEVER BY HALF | Gloumov | Timothy West | Moscow Arts Theatre School |
| UNCLE VANYA | Astrov | Vladimir Bogomolov | Moscow Arts Theatre School |

Radio

| Production | Character | Director | Company |
|---------------------------|----------------------|-----------------|------------------------------|
| THE SECRET PILGRIM | | Patrick Rayner | BBC Radio 4 |
| PLENTY | Sir Andrew Charleson | John Dove | Catherine Bailey Productions |

| Production | Character | Director | Company |
|-------------------|------------------|-----------------|------------------|
| PRECIOUS | Geoff | Jane Morgan | Pier Productions |

Other

| Production | Character | Director | Company |
|------------------------------|------------------|-----------------|----------------------|
| CALAIS 2037 - Podcast | Performer | | New Time Productions |
