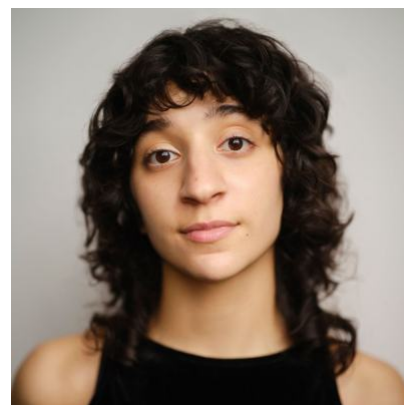


## Sara Hazemi



### Agents

Alexandra Rae

arae@unitedagents.co.uk

### Roles

#### Television

Production	Character	Director	Company
<b>SILO S2 &amp; S3</b>	Hope		Apple TV+
<b>THE CROWN S6</b>	Waitress	May el-Toukhy	Left Bank Pictures / Netflix
<b>THE COCKFIELDS</b>	Waitress		Yellow Door Productions
<b>THIS IS GOING TO HURT</b>	Triage Patient		BBC
<b>MAGPIES LOVE MIRRORS (Web Series)</b>		Rowan Hall Maudslay	

#### Stage

Production	Character	Director	Company
<b>THE HABITS</b>	Maryn	Ed Madden	Hampstead Theatre
<b>OEDIPUS</b>	Lichas/Understudy Antigone	Robert Icke	Sonia Friedman Productions
<b>ENGLISH</b>	Goli	Diyan Zora	Kiln Theatre
<b>ENGLISH</b>	Goli	Diyan Zora	RSC
<b>HALF EMPTY GLASSES</b>	Ash	Kaleya Baxe	Paines Plough

Production	Character	Director	Company
<b>THE ULTIMATE PICKLE</b>	Mam	Eva Sampson	Paines Plough
<b>A SUDDEN VIOLENT BURST OF RAIN</b>	Elif	Yasmin Hafesji	Paines Plough / The Gate Theatre
<b>TALES FROM HANS CHRISTIAN ANDERSON</b>	Maia	Charlotte Conquest	Guildford Shakespeare Company
<b>MAMMON</b>	Annie	Sam Tannenbaum	Mountview
<b>THE LITTLE MERMAID</b>	Pearl	Lauren Partridge	FeverUp
<b>OEDIPUS AT COLONUS</b>	Antigone	Daniel Goldman	
<b>FOOTLIGHTS PANTOMIME: RED RIDING HOOD</b>	Judy	Alistair Henfrey	

## Film

Production	Character	Director	Company
<b>FUGUE (Short)</b>	Podcast Presenter	Will J. Wood	
<b>BENSON (Short)</b>	Angela	Zoe Black	