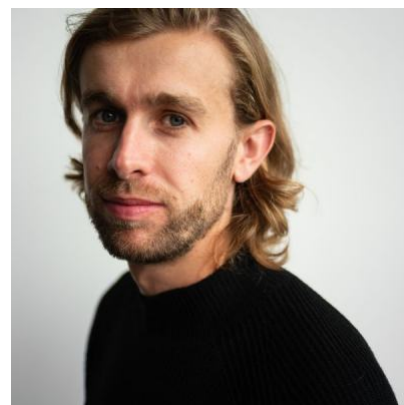


## Jim English



### Agents

Sarah Roberts

SRoberts@unitedagents.co.uk

Assistant

Eve Humphreys

EHumphreys@unitedagents.co.uk

### Roles

#### Film

Production	Character	Director	Company
<b>PETERLOO</b>	Edward Wild	Mike Leigh	Thin Man Films

#### Television

Production	Character	Director	Company
<b>BRASSIC</b>	Townie	Richard Signy	Sky
<b>THE TOWER</b>	Detective Jez Vine	Jim Loach	Mammoth Screen
<b>MY MUM TRACY BEAKER</b>	Weedy Peter Ingham	John McKay	BBC
<b>CORONATION STREET</b>	Tommy Ward	David Moor	ITV
<b>HOLBY CITY</b>	David Jakeman	Toby Frow	BBC
<b>NEW BLOOD</b>	William Gardner	Bill Eagles	BBC & Eleventh Hour Films
<b>DOCTORS</b>	Vince Phelps	Graham Moore	

#### Short Film

Production	Character	Director	Company
------------	-----------	----------	---------

<b>GONE</b>	Jason	Electric Shadow Company	Lawrence Page
<b>THE PACT</b>	Liam	Brady Hood	NFTS

## Stage

<b>Production</b>	<b>Character</b>	<b>Director</b>	<b>Company</b>
<b>WHAT YOU WILL</b>	Puck	Jonathan Moore & Mark Rylance	Shakespeare's Globe
<b>QUALITY STREET (UK TOUR)</b>	Fanny Willoughby/Arthur	Laurie Sansom	Northern Broadsides
<b>THE SPACE IS OCCUPIED</b>	Boz	Mick Martin	Bent Architect
<b>FOR LOVE OR MONEY (UK TOUR)</b>	Martin	Barrie Rutter	Northern Broadsides
<b>RICHARD III (UK TOUR)</b>	Murder/Prince	Barrie Rutter	Northern Broadsides
<b>DARKNET</b>	Jamie	Russel Bender	Southwark Playhouse
<b>THE NORTHMAN SCHOOL</b>	Tom	Mick Martin	Bent Architect
<b>DANCING THROUGH THE SHADOWS</b>	David	Mark Babych	Hull Truck Theatre
<b>HURLING RUBBLE AT THE MOON</b>	Skeff	Jez Bond	Park Theatre/Red Ladder
<b>DEATH AT DAWN</b>	Pte Jack White	Jackie Fielding	Cloud Nine/Linskill Centre
<b>SOLID AIR</b>	Dave	Mike Bradwell	Theatre Royal Plymouth