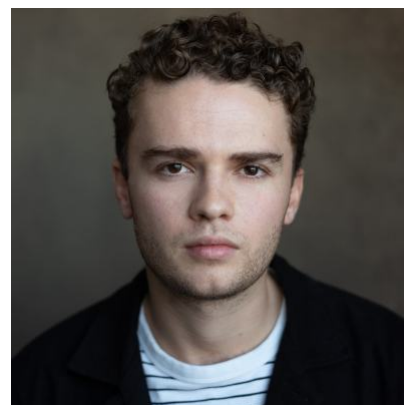


## James Wilbraham



### Agents

Sophie Austin  
saustin@unitedagents.co.uk

Assistant  
Emma Collier  
ECollier@unitedagents.co.uk

### Roles

#### Television

Production	Character	Director	Company
<b>SAS ROGUE HEROES</b>	Roberts	Tom Shankland	Kudos
<b>TOM JONES</b>	Blifil	Georgia Parris	Mammoth Screen for ITV
<b>IN MY SKIN (Series 1 &amp; 2)</b>	Travis	Lucy Forbes	Expectation for BBC
<b>ORDINARY LIES</b>	Finn	Misha Manson-Smith	BBC
<b>POBOL Y CWM (2015-2018)</b>	Chester (Series Regular)	Various	BBC Wales / S4C
<b>GWAITH/CARTREF (HOMEWORK)</b>	Liam	Rhys Powys	Fiction Factory

#### Stage

Production	Character	Director	Company
<b>OEDIPUS</b>	Polyneices	Robert Icke	Wyndham's Theatre
<b>IKARIA (UK Tour)</b>	Simon	Philippa Lawford	Tightrope Theatre
<b>THE ELECTRIC</b>	Den	Anthony Simpson-Pike	Richard Burton Company

Production	Character	Director	Company
<b>ALL THAT I AM</b>	Sebastien	Rupert Hands	Richard Burton Company
<b>TWELFTH NIGHT REMEMBERED</b>	Feste/Student	Jonathan Munby	Richard Burton Company
<b>MEASURE FOR MEASURE</b>	Angelo	Simon Reeves	Richard Burton Company
<b>ARCADIA</b>	Captain Brice	Hannah Noone	Richard Burton Company

## Short Film

Production	Character	Director	Company
<b>RADIANCE</b>	Robert	Eryl Phillips	Richard Burton Company
<b>3WISHES</b>	James	James Owen	Arthrofilm
<b>FORWARD FIX</b>	Isaac		Paternoster Production
<b>FERRIS &amp; THE FANCY PIGEON</b>	Alex	James Gardner	NTFS

## Workshop

Production	Character	Director	Company
<b>MAGNIFICENT MEN</b>	William Boeing	Emily Burns	National Theatre