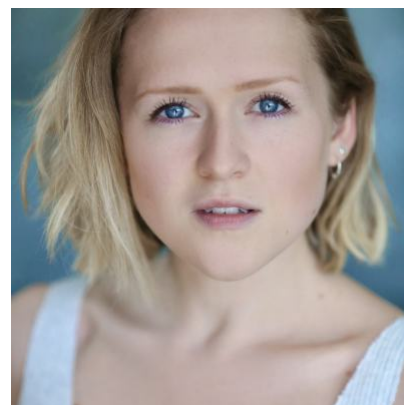


## Rachel Harper

### Writer / Performer

Rachel Harper is a writer and actor from Wrexham, North Wales. A comedy writer at heart, she cut her narrative teeth in continuing drama writing ten-plus episodes of Casualty. Alongside this, she has also been commissioned to develop a wealth of projects within comedy and comedy-drama both in the UK and in the US, from commissioned scripts and sizzle reels to short-form set to air later this year. She's also an impressionist having appeared on The Ellen Show in 2020.



## Agents

Jennifer Thomas

JThomas@unitedagents.co.uk

Assistant

Nacho Martin

nmartin@unitedagents.co.uk

020 3214 0796

Carly Peters

cpeters@unitedagents.co.uk

0203 214 0985

Assistant

Fathima Abdullah

fabdullah@unitedagents.co.uk

## Credits

### In Development

Production	Company	Notes
LAND OF MY FATHER'S	Merman	2 x 30'
DEAD ON ARRIVAL	Boom Cymru	2 x 30'
THEATRICALS	Braintrust	1 x 30'
THAT GIRL AGAIN	Fired Up	New series in development
LOVE IS LOVE	Braintrust	Feature in development

## Television

Production	Company	Notes
<b>SHACKED UP</b>	BBC Studios	30-minute Comedy
<b>QUARUNTEENED</b>	Brain Trust	30-minute US Comedy Sitcom
<b>COP ON</b>	Brain Trust	30 min Comedy Sitcom
<b>MISSGUIDED</b>	BBC/MERMAN	Comedy Short
<b>CASUALTY</b> 2021 - 2025	BBC	11 episodes
<b>BACKWASHED</b> 2021	BBC Wales	As co-writer Dir. Tom Price 6 x 5' original comedy

## Radio

Production	Company	Notes
<b>WRECSAM</b>	BBC	As Writer / Performer Part of the BBC's UNITED KINGDOM series

## Theatre

Production	Company	Notes
<b>WELLINGTON 24</b> 2020	LEH Write the Girl / The Jane Ross Theatre	New play commission as part of the LEH Write the Girl initiative.
<b>RATTLED</b> 2019	Old Red Lion Theatre	Dir. Jemma Gross *OFFIE nominated "Harper's writing is scalpel sharp" - The Stage.
<b>OH! YOU PRETTY THINGS (short)</b> 2018	Southwark Playhouse	Dir. Alex Howarth
<b>THE EDINBURGH TEST (short)</b> 2017	Tristan Bates Theatre / Theatr Clwyd	Dir. Jemma Gross *Shortlisted for the Charlie Hartill special reserve fund.