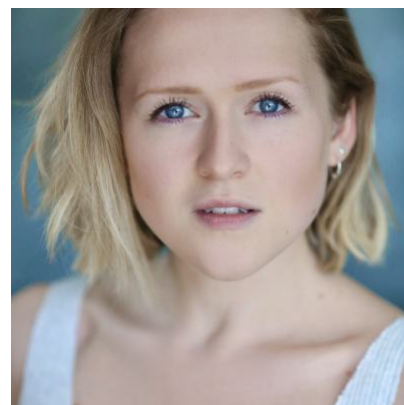


Rachel Harper

Writer / Performer

Offie nominated for best Female Performance in 2019 for one woman show RATTLED



Agents

Carly Peters

cpeters@unitedagents.co.uk

0203 214 0985

Assistant

Fathima Abdullah

fabdullah@unitedagents.co.uk

Roles

Stage

| Production | Character | Director | Company |
|----------------------------------|--|----------------|---------------------------|
| RATTLED | Em | Jemma Gross | Missmanaged Theatre |
| THE GRIFT (Site Specific) | Elouise | Tom Salamon | Tarento Productions |
| THE EDINBURGH TEST | Bella | Jemm Gross | Missmanaged Theatre |
| POLITIC MAN (Tour) | Joyce Salter/ Evelyn Lowe/ Joan Strang | Alison Mead | Three4All Theatre Company |
| THE BEAUX STRATAGEM | Cherry Boniface | Matt Steinberg | East 15 Acting School |
| THE CHERRY ORCHARD | Anya | Luke Dixon | Site Specific |
| KING LEAR | Cordelia/ The Fool | Dr. Chris Main | East 15 Acting School |

Television

| Production | Character | Director | Company |
|------------|-----------|----------|---------|
|------------|-----------|----------|---------|

| | | | |
|--------------------------------------|---------------|-------------|--------------|
| There She Goes - 2023 Special | Soft Play Mum | Tom McKay | Merman / BBC |
| GRANTCHESTER S8 | Dot Parsons | Rob Evans | Lovely Day |
| CASUALTY | Minnie | Merlyn Rice | BBC |
| DOCTORS | Lauren Scapp | Merlyn Rice | BBC |

Short Film

| Production | Character | Director | Company |
|------------------------------|------------------|---------------------------------|----------------|
| WE KILLED BRIAN NOBLE | Alex | Max McLachlan and Michael Upson | |

Radio

| Production | Character | Director | Company |
|-----------------------------|------------------|-------------------------------------|----------------|
| Hard Times | Louisa Gradgrind | | BBC Radio 4 |
| Samaritan Number One | Reenee | Emma Harding, BBC Audio Drama Wales | BBC Radio 4 |
| WRECSAM | Narrator | | BBC |

Other

| Production | Character | Director | Company |
|-------------------------------|------------------|-----------------|----------------|
| UNTITLED PATHE PROJECT | | | Pathe |