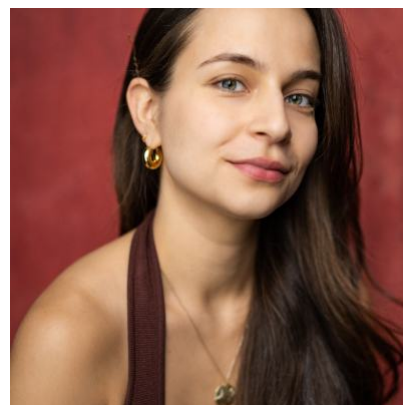


## Selma Alkaff

### Actor

Selma is half Arab-Singaporean and half Swedish. She speaks English and Malay fluently as well as speaking Swedish. She is based in London and trained at Royal Central School of Speech & Drama.



### Agents

Phoebe Isles  
phoebe.isles@unitedagents.co.uk

Assistant  
Lara Buxton  
lbuxton@unitedagents.co.uk

### Roles

#### Stage

| Production  | Character    | Director             | Company                                  |
|---|--------------|----------------------|--|
| <b>NINE MOONS</b>                                 | Sage         | Danäe Cambrook       | Girls To Wolves                          |
| <b>THE PLATFORM</b>                               | Zahra        | Sohaila Ferrier      | Offshoots Theatre                        |
| <b>NINE MOONS (REHEARSED STAGING)</b>             | Sage         | Danäe Cambrook       | Mrs C's Collective                       |
| <b>THE THINGS THAT MATTER (Rehearsed reading)</b> | Rose         | Merle Wheldon-Posner | The Bomb Factory                         |
| <b>BULL</b>                                       | Isabelle     | Victoria Chen        | Wild Rice Theatre in Singapore           |
| <b>SIX DEGREES OF SEPARATION</b>                  | Kitty        | Geoff Colman         | Royal Central School of Speech and Drama |
| <b>THE ORESTEIA</b>                               | Clytemnestra | Claudette Williams   | Royal Central School of Speech and Drama |
| <b>THE ROVER</b>                                  | Moretta      | Caroline Eves        | Royal Central School of Speech and Drama |

| Production                          | Character    | Director         | Company                                  |
|-------------------------------------|--------------|------------------|--|
| <b>MACBETH</b>                      | Lady Macbeth | Nick Moseley     | Royal Central School of Speech and Drama |
| <b>BUS STOP</b>                     | Cherie       | Eric Loren       | Royal Central School of Speech and Drama |
| <b>DRAGONFLIES</b>                  | Maxine       | Tracie Pang      | Pangdemonium                             |
| <b>THE MERCHANT OF VENICE</b>       | Jessica      | Nick Moseley     | Royal Central School of Speech and Drama |
| <b>AN IDEAL HUSBAND</b>             | Mrs Cheveley | Peter McAllister | Royal Central School of Speech and Drama |
| <b>THREE SISTERS</b>                | Masha        | Nick Moseley     | Royal Central School of Speech and Drama |
| <b>CLOSER</b>                       | Anna         | Nick Moseley     | Royal Central School of Speech and Drama |
| <b>CIRCLE MIRROR TRANSFORMATION</b> | Lauren       | Tracie Pang      | Pangdemonium                             |

## Short Film

| Production                                 | Character   | Director   | Company |
|--|-------------|------------|---------|
| <b>LONG STORY SHORT: A BLOODY WET MESS</b> | Audrey      | Ben Yeo    | NSFTV   |
| <b>BIRTHDAY BOY (Short)</b>                | Elle-Louise | Leo LeBeau | NFTS    |