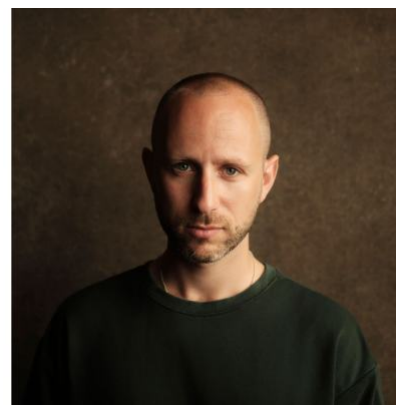


## Guy Woolf

Singer / Actor

*Guy is an actor, director and composer based in London.*



## Agents

Kitty Laing

klaing@unitedagents.co.uk

+44 (0) 203 214 0915

Assistant

Sarah Williams

swilliams@unitedagents.co.uk

Assistant

Isaac "Zac" Hall

ihall@unitedagents.co.uk

## Roles

### Stage

Production	Character	Director	Company
<b>THE LAST FIVE YEARS</b>	Jamie	Hal Chambers	BARN Theatre / Reading Rep
<b>As You Like It</b>	Dennis	Ellen McDougall	The Globe
<b>BROKKEN TOYS</b>	Dorin	Raymi Ortuste Quiroga	Cervantes Theatre
<b>THE CHER SHOW</b>	Sonny	Arlene Phillips	ROYO
<b>DENIM: WORLD TOUR</b>	Electra Cute	Jess Edwards and Steve Marmion	Soho Theatre and United Agents
<b>DENIM TITANIQUE</b>	Electra Cute	Jess Edwards	Granville and Parham Productions
<b>THYESTES</b>	Atreus	Joseph Cunningham	Courtyard Theatre
<b>HIV VOICES</b>	Man	Hugh Wyld	The King's Head Theatre
<b>ROMEO AND JULIET</b>	Romeo	Ollie Kaderbhai	Bridewell Theatre
<b>THE TEMPEST</b>	Ferdinand	Sarah Redmond	Waterloo East Theatre

Production	Character	Director	Company
<b>A TIME TO SPEAK</b>	Man	Hugh Wyld	Lost Theatre and Various
<b>CHRISTOPHER AND HIS KIND</b>	Heinz	Katherine Timms	The Space
<b>MEASURE FOR MEASURE</b>	Claudio	Charlie Parham	American Tour / Jackson's Lane Theatre
<b>ANGELS IN AMERICA PART 1 : MILLENNIUM APPROACHES</b>	Louis Ironson	Hugh Wyld	CUADC
<b>THE MERCHANT OF VENICE</b>	Shylock	Celine Lowenthal	European Tour/The Cockpit Theatre
<b>WAITING FOR GODOT</b>	Lucky	Charlie Parham	Fletcher Players
<b>AS YOU LIKE IT</b>	Oliver	Charlie Parham	Edinburgh Festival Fringe / Lion & Unicorn Theatre
<b>THE CURSE OF MACBETH</b>	Macbeth	Max Barton	Edinburgh Festival Fringe

## Television

Production	Character	Director	Company
<b>Trigonometry</b>	Drag Queen	Athina Rachel Tsangari	House Productions for BBC2