

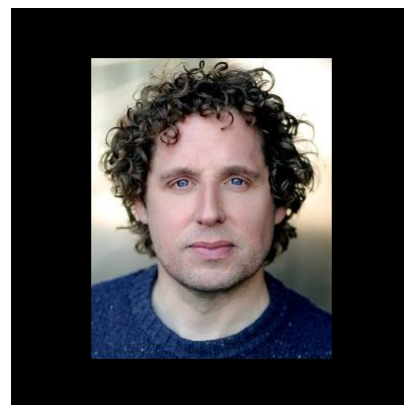
## David Newman

### Actor

David trained at the Liverpool Institute For Performing Arts BA (Hons) Acting

[Showreel](#)

[Comedy Reel](#)



### Agents

Lucia Pallaris

lpallaris@unitedagents.co.uk

+44 (0) 20 3214 0909

Associate Agent

Eleanor Kirby

ElKirby@unitedagents.co.uk

### Roles

#### Film

| Production                             | Character      | Director           | Company                    |
|--|----------------|--------------------|----------------------------|
| <b>A SERIAL KILLER'S GUIDE TO LIFE</b> | Barry Withnott | Staten Cousins-Roe | Forward Motion Pictures    |
| <b>DEADTECTIVES</b>                    | Lloyd          | Tony West          | Dark Factory Entertainment |
| <b>THE ARTIST</b>                      | Franz Schulz   | Dan Zeff           | ROUGH CUT TV LTD           |

#### Television

| Production           | Character     | Director           | Company                   |
|----------------------|---------------|--------------------|---------------------------|
| <b>BIG MOOD</b>      | Leon          | Rebecca Asher      | Dancing Ledge Productions |
| <b>AGATHA RAISIN</b> | Percy Fleming | Caroline Giammetta | Company Pictures / SKY    |
| <b>CASUALTY</b>      | Seb Sanderson | Fiona Walton       | BBC                       |

| Production                             | Character             | Director         | Company              |
|--|-----------------------|------------------|----------------------|
| <b>VICTORIA</b>                        | Henry Cole            | Delyth Thomas    | ITV                  |
| <b>A DISCOVERY OF WITCHES S1 and 2</b> | Stephen Proctor       | Various          | Bad Wolf             |
| <b>ENDEAVOUR</b>                       | Dr. Adrian Crowley    | Brady Hood       | Mammoth Screen       |
| <b>THE WINDSORS</b>                    | Richard The Lionheart | Adam Miller      | Channel 4            |
| <b>URBAN MYTHS: HITLER THE ARTIST</b>  | Franz Schultz         | Dan Zeff         | SKY                  |
| <b>GALAVANT</b>                        | Footman               | John Fortenberry | ABC                  |
| <b>NEW TRICKS</b>                      | Robin                 | Andy Hay         | Wall to Wall for BBC |
| <b>SHERLOCK (Series 3)</b>             | Medic                 | Nick Hurran      | Hartwood Film        |

## Stage

| Production                            | Character                        | Director           | Company                       |
|---------------------------------------|----------------------------------|--------------------|-------------------------------|
| <b>OUR COUNTRY'S GOOD</b>             |                                  | Max Stafford-Clark | for Out of Joint              |
| <b>ABOVE AND BEYOND</b>               |                                  |                    | Look Left Look Right          |
| <b>CHARIOTS OF FIRE</b>               | PRINCE OF WALES, ROBIN, PROVOST. | Ed Hall            | Gielgud Theatre               |
| <b>CHARIOTS OF FIRE</b>               | PRINCE OF WALES, ROBIN, PROVOST. | Ed Hall            | The Hampstead Theatre         |
| <b>COMEDY OF ERRORS / RICHARD III</b> | Luciana / Catesby                | Ed Hall            | Propeller                     |
| <b>THE CANTERBURY TALES</b>           | Nicolas / Young Knight           | Conrad Nelson      | Northern Broadsides           |
| <b>POCKET DREAM</b>                   | Hermia                           | Ed Hall            | Propeller                     |
| <b>TINTIN</b>                         | Calculus / Snowy                 | Rufus Norris       | Young Vic / Sonia Friedman    |
| <b>FAUST</b>                          | Aubrecht                         | Felix Barrett      | Punchdrunk / National Theatre |
| <b>WARS OF THE ROSES</b>              | Somerset / Richmond              | Barrie Rutter      | West Yorkshire Playhouse      |
| <b>THE GRADUATE</b>                   | Benjamin                         | Chris Garner       | The New Vic                   |
| <b>GHOSTS IN THE COTTONWOODS</b>      | Pointer                          | Robert Gillespie   | The Arcola                    |