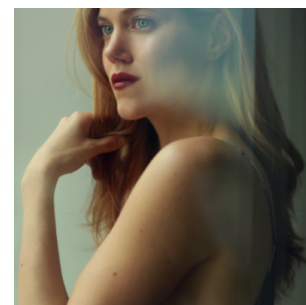


Charity Wakefield



Agents

Kirk Whelan-Foran
+44 (0) 20 3214 0800

Assistant
Belzy Day
bday@unitedagents.co.uk
02032140800

Roles

Film

Production	Character	Director	Company
Kill Switch	Mia	Tim Smit	FilmNation
A Midsummer Night's Dream	Quince	Casey Wilder Mott	Joshua Skurla and Douglas Matejka
Day of the Flowers	Ailie	John Roberts	Rogue Elephant Pictures
Serena	Agatha	Susanne Bier	Serena Productions
Scar Tissue	Sam	Scott Mitchell	Sterling Pictures
Act Of God		Ezna Sands	Giant Films
Burlesque Fairytales		Susan Luciani	Double Barrel Prods
Exitz	Billie	Laurens C Postma	Inspired Movies
Past Present Future Imperfect	Beanie	Roger Thorpe	Fluidity Films
The Beachcombers	Claire		Silvertip Films
The Book	Becky	Stanley Llewellyn Collins	Angelic Films
Vivaldi	Ludovica	Liana Marabini	Liamar Media World

Television

Production	Character	Director	Company
Bounty Hunters	Leah	Will Sinclair	Cavebear for Sky
Einstein	Betty Neumann	Various	National Geographic

Production	Character	Director	Company
Doctor Who	Lucy	Ed Bazalgette	BBC
The Halcyon	Charity Lambert	Stephen Woolfenden	Left Bank
Broken (Pilot)	Jules	Jeremy Podeswa	ABC Studios
The Player	Cassandra	Various	NBC
Close to the Enemy	Julia	Stephen Poliakoff	BBC
Wolf Hall	Mary Boelyn	Peter Kosminsky	Company Pictures/BBC
High Moon	Eve	Adam Kane	Universal
Mockingbird Lane	Marilyn/US Pilot	Bryan Singer	NBC
Agatha Christie's Marple	Molly Kendall	Charlie Palmer	
Leaving	Phoebe	Gaby Dellal	Leaving Series Ltd
Any Human Heart		Michael Samuels	Carnival
Legally Mad	US pilot		NBC
Casualty 1909	Ethel Bennet	Bryn Higgins	BBC
FREDDI/pilot	Yasmin		Arbie
Casualty 1907	Ethel Bennet	Bryn Higgins	BBC
Rapunzel	Rapunzel	Catherine Morshead	BBC
Sense And Sensibility	Marianne	John Alexander	BBC
-			
The Wonderful World Of Freddi Faroubb	Yasmin		BBC
DOCTORS	Carole Hilton		BBC
JANE EYRE	Miss Temple	Susanna White	BBC
HEX	Lucy	Brian Grant	Shine Productions
HOLY COW	pilot	Dan Brown	Riverchild films
STATE OF PLAY	VO	David Yates	BBC

Stage

Production	Character	Director	Company
Seminar	Kate	Terry Johnson	Hampstead Theatre
The Blackest Black	Abi	MICHAEL LONGHURST	Hampstead Theatre
-			
Candida	Candida	Simon Godwin	Theatre Royal Bath
These Shining Lives	Catherine	Loveday Ingram	Park Theatre
No Naughty Bits	Nancy	Edward Hall	Hampstead Theatre
The Cherry Orchard	Anya	Howard Davies	National Theatre
-			
THE RIVALS	Lydia Languish	Jessica Swale	Southwark Playhouse
24 HOUR PLAYS	THIS ONE'S FOR YOU HULA GIRL	Claire Lizzimore	Old Vic

Production	Character	Director	Company
BABY WITH THE BATHWATER	Cynthia/Angela/MsP/Susan	Jonathan Loe	Old Red Lion
BADNUFF	Jay	Owen Lewis	Bush Theatre
FAST FOOD	Bates	Anna Linstrum	St Gabriels
HUMAN SHIELD	Alice	Jo Howarth	Komedia
IT'S YOUR FUNERAL BABY	Sally Payne	Maria Pattinson/Susannah Waters	Soho Theatre
ITS YOUR FUNERAL BABY	Sally Payne	Sue Gibbons	Komedia
KURT WEILL CABARET	Soprano Soprano	Julian Dawes /David Sibley	Ketners
LETTERS & NIGHTS	Mara	Andrea Brooks	Komedia
OTHELLO	Desdemona	Jo Howarth	Shakespeare's Globe Tour
PALESTINE YANI	Basra Boy /Puppeteer	Maria Pattinson	Komedia
PILLARS OF THE COMMUNITY	Mrs Holt	Katie Goodwin	Pegasus Theatre
SUGARED GRAPEFRUIT	Ros	Andrea Brooks	Old Vic
THE CIRCLE		Jonathan Church	Chichester Festival Theatre
THE GRADUATE	Elaine	Chris Garner	New Vic
THE SUICIDE	Margarita	Joyce Branagh	B.A.C
THE TEMPEST	Ariel	George Peck	Pegasus Theatre
THE THREE MUSKETEERS	Constance	Tim Sheader	Bristol Old Vic
YESTERDAY WAS A WEIRD DAY	Siobhan/Camilla/Baz/John	Mimi Poskitt	Edinburgh Festival /BAC

Radio

Production	Character	Director	Company
Votes for Women	Jean	Marion Nancarrow	BBC Radio 3
National Velvet	Meredith/Antonia	Melanie Harris	BBC Radio 4

Other

Production	Character	Director	Company
THE BIRTHDAY PARTY	Meg	Katie Goodwin	Oxford School of Drama
THE JEALOUS WIFE	Lady Freelove	Jacque Crago	Oxford School of Drama
THE MONEY SHOW	Flower Bonham-Bon	William Kerley	Oxford School of Drama
THE PROVOKED WIFE	Mademoiselle	Jacque Crago	Oxford School of Drama

Production	Character	Director	Company
THE THREE SISTERS	Irena	Robert Fried	Oxford School of Drama
TWELFTH NIGHT	Viola	George Peck	Oxford School of Drama

Additional information

Violin (Grade 5); B.A.D.C. Stage Fighting Certificate; Accents: Native RP, Strong accent skills; Strong Soprano; Full Clean Driving License.