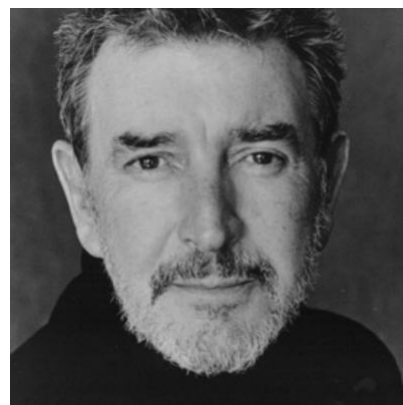


Gawn Grainger

Actor

Gawn began his career as the Boy Prince in Ivor Novello's KING'S RHAPSODY at the Prince's Theatre when he was twelve years old.



Agents

Dallas Smith	Associate Agent
	Alexandra Rae
	arae@unitedagents.co.uk
	+44 (0) 20 3214 0800
	Assistant
	Luke Bridgeman
	lbridgeman@unitedagents.co.uk
	+44 (0) 20 3214 0800

Roles

Film

Production	Character	Director	Company
BLOOD ROYAL			
CHRISTMAS CAROL			Hallmark
JANICE BEARD 45 WPM			
RAGGEDY RAWNEY			
SIXTY SIX	Mr Kay		Sixty Six Films
THE LITTLE DRUMMER GIRL			

Television

Production	Character	Director	Company
LABYRINTH	Simeon	Christopher Smith	Scott Free Productions

Production	Character	Director	Company
NATIVITY	Levi	Coky Giedroyc	Kudos / Red Planet for BBC
A BEGGAR'S OPERA			
BAVARIAN NIGHTS			
BIG DEAL			
BLACK TOWER			Anglia
CHELWORTH			BBC
COCKLES			
CRIME TRAVELLER			Carnival Films
CROWN COURT			
DALZIEL AND PASCOE			
DARLING BUDS OF MAY			YTV
ELIZABETH ALONE			
FAMILY BUSINESS	Francis		Tiger Aspect
FOYLES WAR	DCS Fielding		Greenlit
GENTLEMEN AND PLAYERS			TVS
GROWING RICH			Anglia
HAIL CAESAR			
HEART OF THE COUNTRY			BBC
HELPING HAND			
HETTY WAINTHROP INVESTIGATES			BBC
JULIET BRAVE			
MACBETH			
MAN AT THE TOP			
MEN BEHAVING BADLY			
MERLIN			Noel Gay
MIDSOMER MURDER'S	Les Flux		Bentley Productions
MISSING FROM HOME			
MISTERIOSO			BBC
MITCH			LWT
MUCK AND BRASS			Central
OCCUPATION DEMOCRAT			
POIROT			LWT
PRIVATE SCHULTZ	Hitler		
RUMPOLE OF THE BAILEY			Thames

Production	Character	Director	Company
RUNNING WILD			LWT
SHADOW OF THE TOWER			
SHE STOOPS TO CONQUER			
SOFTLY, SOFTLY			
SON OF MAN			
STRANGERS AND BROTHERS			
TAGGART			STV
THE BILL			Thames
THE CONTRACTOR			BBC
THE EXPERT			
THE MARRIAGE			
THE ONEDIN LINE			
THE PARTY			BBC
THE TRAVELLING MAN			Granada
THREE PIECE SUITE			
WHEN WE ARE MARRIED			BBC

Stage

Production	Character	Director	Company
DON JUAN IN SOHO	Louis	Patrick Marber	Playful Productions
SAINT GEORGE AND THE DRAGON	Charles	Lyndsey Turner	National Theatre
THE ENTERTAINER	Billy Rice	Rob Ashford	Kenneth Branagh Theatre Company
THREE DAYS IN THE COUNTRY	Schaaf	Patrick Marber	National Theatre
THE CHERRY ORCHARD	Firs	Katie Mitchell	The Young Vic
MACBETH	Duncan/Doctor/Old Man	Eve Best	The Globe
THE RECRUITING OFFICER	Justice Balance	Joise Rourke	Donmar Warehouse
A WOMAN KILLED WITH KINDNESS	Nicholas	Katie Mitchell	National Theatre
ONASSIS	Costa	Nancy Meckler	Novello Theatre, West End
REALLY OLD, LIKE 45	Robbie	Anna Mackmin	National Theatre

Production	Character	Director	Company
A MONTH IN THE COUNTRY			Albery
ABSOLUTELY PERHAPS			Wyndhams Theatre
AMY'S VIEW	Frank		Theatre Royal, Bath
ARISTOCRATS			Chichester Festival Theatre
FOOL FOR LOVE			Donmar Warehouse
GIVE ME YOUR ANSWER DO			Hampstead and New York
MOUNTAIN LANGUAGE		Harold Pinter	Almeida
MUTABILITE		Trevor Nunn	Cottesloe
NO MAN'S LAND		Harold Pinter	Almeida
PARTY TIME		Harold Pinter	Almeida
SING YER HEART OUUT FOR THE LANDS			National Theatre
SOME TRACE OF HER	Ensemble	Katie Mitchell	National Theatre
TAKING SIDES			Chichester and West End
TALES FROM HOLLYWOOD			Donmar Theatre
THE CRUCIBLE			Comedy Theatre
THE DEATH AND THE RESURRECTION OF MR ROCHE			Hampstead Theatre Club
THE DEVIL'S DISCIPLE	Dick Dudgeon		Theatre Royal, Bristol
THE GIVE AWAY			West End
THE LAST DAYS OF JUDAS ISCARIOT	Caiphas and Matthew	Rupert Goold	Almeida
THE MISANTHROPE			Nattional and New York
THE PASSION			National and Tour
THE SEAGULL			National Theatre
UNCLE VANYA			Theatr Clywd
WISHBONES			The Bush
YOU CAN'T TAKE IT WITH YOU	Martin Vanderhoff		Southwark Playhouse

Radio

Production	Character	Director	Company
THE PICKWICK PAPERS	Squire Wardle		Promenade Enterprises