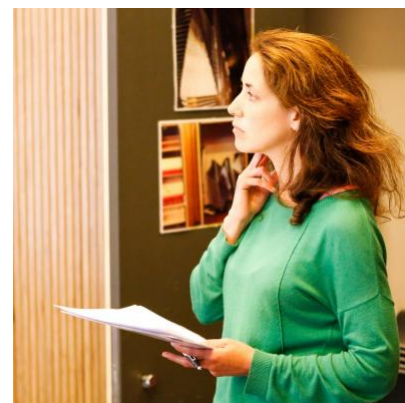


## Audrey Sheffield

### Director

After initially studying Psychology and Anthropology, followed by an MSc in Medical Anthropology, Audrey then went on to complete a three-year director's training with Sam Kogan in London and Moscow, and further directing programmes at the Young Vic, as Trainee Resident Director at the King's Head, and through invited workshops at the National Theatre Studio, the RSC and with Peter Brook.

Audrey is on the readers' panel at the National Theatre, and she regularly facilitates Chat Back sessions for the directors' network at the Young Vic.



### Agents

Giles Smart

Associate Agent  
Jennifer Thomas  
jthomas@unitedagents.co.uk  
+44 (0)20 3214 0934

### Credits

#### In Development

Production	Company	Notes
<b>PINTER AT THE PINTER</b> 2018	ATG	Associate Director on THE ROOM, VICTORIA STATION and FAMILY VOICES Dir. Patrick Marber
<b>APOLOGIA</b> 2018	English Theatre Frankfurt	

#### Theatre

Production	Company	Notes
<b>AS DIRECTOR</b>		
<b>NFTS MA SCREENWRITERS' GRADUATION SHOWCASE</b> 2018	NFTS / Soho Theatre	As Director
<b>CLEANSE and ASHES TO ASHES, OOLONG TO ASSAM</b> 2018	National Theatre	Readings for NT New Views
<b>OUR LADY OF 121ST STREET</b> 2018	BOVTS	By Stephen Adly Guirgis
<b>THE DARK ROOM</b> 2017	Theatre503	*Nominated - Best Director - Offies 2017
<b>WE TOO ARE GIANTS</b> 2017	Tricycle	Written by Chino Odimba
<b>DON JUAN IN SOHO</b> 2017	West End	For understudy run

<b>Production</b>	<b>Company</b>	<b>Notes</b>
<b>DEAD FUNNY</b> 2017	West End	For understudy run
<b>THE SCAR TEST</b> 2016	Theatre Delicatessen, Sheffield	By Hannah Khalil
<b>HAND TO GOD (Understudy Run)</b> 2016	West End	By Robert Askins
<b>PRINCE OF DENMARK</b> 2015	Karamel Club, Mountview	By Michael Lesslie
<b>THE SCAR TEST</b> 2015	Arcola, Bedford, Colchester	By Hannah Khalil
<b>ORESTEIA (A RESPONSE)</b> 2015	Almeida (Almeida Participation)	By Paul Webster
<b>TEN POUNDS - DEVISED</b> 2015	National Theatre	By Angela Betzien
<b>PIGGIES</b> 2015	RCSSD	By Milly Thomas
<b>ELECTRA (Understudy Run)</b> 2014	Old Vic	By Frank McGuinness
<b>SOMETHING WICKED (Reading)</b> 2014	National Theatre	By Cameron Finlay
<b>ALMOST NEAR</b> 2014	Finborough Theatre	By Pamela Carter
<b>JUNE</b> 2013	Park Theatre	By Isley Lynn
<b>APPLES</b> 2013	Theatre503	By Brian Walters
<b>LITTLE FLOWER OF EAST ORANGE</b> 2013	National Theatre Studio	By Stephen Adly Guirgis
<b>ONE MAN TWO GUVNORS (Understudy Run)</b> 2012 - 2013	West End	By Richard Bean
<b>BOHEMIANS</b> 2012	Etcetera	By Jaki McCarrick
<b>MOONY'S KID DON'T CRY</b> 2011	King's Head	By Tennessee Williams
<b><u>ASSOCIATE/ ASSISTANT DIRECTING</u></b>		
<b>DON JUAN IN SOHO</b> 2017	The Wyndham's	Written & Directed by Patrick Marber
<b>DEAD FUNNY</b> 2016	Vaudeville Theatre (West End)	As Associate Director Written and Directed by Terry Johnson
<b>HAND TO GOD</b> 2016	West End	Dir. Robert Askins
<b>ELECTRA</b> 2014	Old Vic	Dir. Ian Rickson
<b>RAPTURE, BLISTER, BURN</b> 2014	Hampstead Theatre	Dir. Peter DuBois
<b>ANTONY AND CLEOPATRA</b> 2013	RSC	Dir. Tarell Alvin McCraney
<b>ONE MAN, TWO GUVNORS</b> 2012 - 2013	West End	Dir. Nicholas Hytner
<b>THE EFFECT</b> 2012 - 2013	National Theatre	Dir. Rupert Goold
<b>THE EQUALITY ILLUSION</b> 2012	National Theatre Studio	Dir. Carrie Cracknell

<b>Production</b>	<b>Company</b>	<b>Notes</b>
<b>TROILUS AND CRESSIDA</b> 2012	RSC / The Wooster Group	Dir. Mark Ravenhill/Liz LeCompte
<b>LAY DOWN YOUR CROSS</b> 2012	Hampstead Theatre	Dir. Clare Lizzimore
<b>THE CORONATION OF POPPEA</b> 2011	OperaUpClose, King's Head	Dir. Mark Ravenhill

## Other

<b>Production</b>	<b>Company</b>	<b>Notes</b>
<b>NT CONNECTIONS</b> 2013 - 2018	National Theatre	As Director
<b>COMPANY DIRECTOR</b> 2017	Tricycle Theatre Community	
<b>SCRIPT READER</b> 2015	National Theatre, Bruntwood Prize, Hampstead Theatre, Theatre503, The Print Room, Judge for Adrian Pagan Award	
<b>CO-FACILITATOR FOR NT NEW VIEWS LONDON HUB</b> 2013 - 2017	National Theatre	
<b>LEAD FACILITATOR AND DIRECTOR FOR YOUNG PEOPLE</b>	National Theatre, Almeida, Old Vic, RSC	