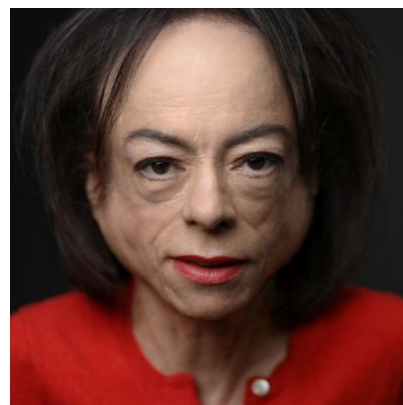


## Liz Carr

### Actor

Best Supporting Actress in a Play - Olivier Award 2022 Winner



## Agents

Maureen Vincent

Assistant

Maddie Coelho

MCoelho@unitedagents.co.uk

0203 214 0772

Lorna Fallowfield

Assistant

Ellie James

lfallowfield@unitedagents.co.uk

ejames@unitedagents.co.uk

020 3214 0800

020 3214 0800

## Roles

### Television

| Production                       | Character        | Director                                   | Company                              |
|----------------------------------|------------------|--|--------------------------------------|
| <b>GOOD OMENS Series 2</b>       | Saraqel          | Various                                    | Amazon Studios                       |
| <b>THE WITCHER Series 2</b>      | Fenn             | Steve Surjik and various                   | Netflix                              |
| <b>THIS IS GOING TO HURT</b>     | Tina             | Lucy Forbes   Tom Kingsley                 | Sister Pictures for BBC              |
| <b>THEN BARBARA MET ALAN</b>     | Meg              | Bruce Goodison & Amit Sharma               | Dragonfly TV for BBC                 |
| <b>WHO DO YOU THINK YOU ARE?</b> | Self             | Mary Cranitch   Sarah Feltes               | Wall to Wall Productions for BBC One |
| <b>CRIPTALES</b>                 | Meg              | Ewan Marshall   Amit Sharma   Jenny Sealey | BBC                                  |
| <b>DEVS</b>                      | Lecturer         | Alex Garland                               | DNA Films                            |
| <b>THE OA (SERIES 2)</b>         | Dr Marlow Rhodes | Zal Batmanglij                             | Netflix                              |

| Production                      | Character                        | Director      | Company             |
|---------------------------------|----------------------------------|---------------|---------------------|
| <b>LES MISERABLES</b>           | Fantine's Concierge              | Tom Shankland | Lookout Point / BBC |
| <b>SILENT WITNESS</b>           | Clarissa Mullery<br>(Series Reg) | Various       | BBC                 |
| <b>MORNING HAS BROKEN</b>       | Annabel                          | Dan Clark     | Brown Eyed Boy      |
| <b>CBEEBIES BEDTIME STORIES</b> | Herself                          |               | BBC                 |

## Film

| Production            | Character          | Director       | Company                         |
|-----------------------|--------------------|----------------|---------------------------------|
| <b>INFINITE</b>       | Garrick            | Antoine Fuqua  | Closest to the Hole Productions |
| <b>LE ACCELERATOR</b> | The Death Provider | Thomas Eikrem  | Filmrage                        |
| <b>THE BEATEN</b>     | Liz                | Simon McKeowan | Short Film                      |

## Stage

| Production   | Character             | Director                      | Company  |
|--|-----------------------|-------------------------------|--|
| <b>THE NORMAL HEART</b>                              | Dr Emma Brookner      | Dominic Cooke                 | The National Theatre                           |
| <b>AND OTHERS</b>                                    | Actor                 | Jenny Sealey                  | National Theatre                               |
| <b>TIT-BITS</b>                                      | MC                    |                               | Southbank Centre                               |
| <b>THE UGLY GIRL</b>                                 | Inga / Nasty Polly    | Terry Galloway                | Mickee Faust                                   |
| <b>MINIATURES 3 (Rehearsed Reading)</b>              | Various               | Various                       | Soho Theatre / Graeae Theatre Company, Various |
| <b>MINIATURES 2 (Rehearsed Reading)</b>              | Various               | Various                       | The Royal Court and Graeae Theatre Company     |
| <b>IN THE HOUSE OF THE MOLES (Rehearsed Reading)</b> | Inga / Nasty Polly    | Terry Galloway                | Bluecoat Theatre, Liverpool                    |
| <b>CRIPTEASE</b>                                     | Performer and Standup | Mat Fraser & Julie Atlas Muse | Royal Festival Hall                            |
| <b>ABNORMALLY FUNNY PEOPLE</b>                       | Standup               | Simon Minty & Steve Best      | Soho Theatre                                   |
| <b>ASSISTED SUICIDE - THE MUSICAL</b>                | Various               | Simon Startin                 | The Big Lounge Collective                      |
| <b>DUCKIE</b>  | The Queen             |                               | Royal Vauxhall Tavern                          |
| <b>IT HASN'T HAPPENED YET</b>                        | Alex Saunders         | Christine Bruno               |  |
| <b>FOUR ON THE FLOOR</b>                             | Standup               |                               | Hackney Empire                                 |

| Production                          | Character           | Director                | Company                |
|-------------------------------------|---------------------|-------------------------|------------------------|
| <b>BRAVETARTS</b>                   | Standup             |                         | Stand Up Comedy        |
| <b>GEORGE DANDIN</b>                | Madame de Twitville | Philip Osment           | Graeae Theatre Company |
| <b>ABNORMALLY FUNNY PEOPLE</b>      | Standup             | Huw Thomas              |                        |
| <b>THE EXCEPTION &amp; THE RULE</b> | The Guide           | Janwillem Van Den Bosch | The Young Vic          |
| <b>MOTHER COURAGE</b>               | Mother Courage      | Janwillem Van Den Bosch | Graeae Theatre Company |
| <b>THE VAGINA MONOLOGUES</b>        | Various             | Jenny Sealey            | Graeae Theatre Company |

## Radio

| Production                  | Character   | Director                      | Company   |
|-----------------------------|-------------|-------------------------------|---|
| <b>AMY DORRIT</b>           | Mrs Chaudry | Polly Thomas and Jenny Sealey | A Naked production in collaboration with Graeae Theatre Company for BBC Radio 4 |
| <b>ELEPHANT IN THE ROOM</b> | Panellist   |                               | A Chopsy production for BBC Radio 4   |
| <b>WITH GREAT PLEASURE</b>  | Presenter   |                               | BBC Radio 4   |
| <b>THE OUCH! PODCAST</b>    | Presenter   | Damon Rose                    | BBC   |