

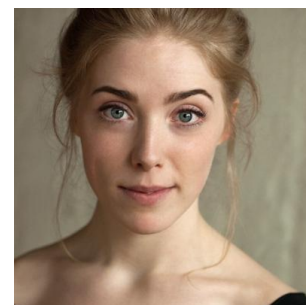
## Hannah Morrish

Winner of the 2014 Laurence Olivier Bursary Award.

2012 - 2015 - The Drama Centre London BA Acting

2012 - NYT REP Company

2009 - 2011 - The National Youth Theatre



## Agents

Jess Alford

jalford@unitedagents.co.uk

Assistant

Ellie Blackford

eblackford@unitedagents.co.uk

020 3214 0800

## Roles

### Television

Production	Character	Director	Company
<b>CALL THE MIDWIFE</b>	Dorothy Whitmore	Sheree Folkson	Neal Street Productions for BBC1

### Stage

Production	Character	Director	Company
<b>CORIOLANUS</b>	Virgilia	Angus Jackson	RSC
<b>TITUS ANDRONICUS</b>	Lavinia	Blanche McIntyre	RSC
<b>JULIUS CAESAR</b>	Portia	Angus Jackson	RSC
<b>ARMS AND THE MAN</b>	Raina	Brigid Larmour	Watford Palace Theatre
<b>A LITTLE HOTEL ON THE SIDE</b>	Violette	Lindsay Posner	Theatre Royal Bath
<b>FLOWERING CHERRY</b>	Judy Cherry	Benjamin Whitrow	Troupe in association with Neil McPherson for the Finborough Theatre
<b>GOODNIGHT CHILDREN EVERYWHERE</b>	Ann	Jonathan Humphreys	Drama Centre
<b>MACBETH</b>	Lady Macbeth	Lawrence Evans	Drama Centre
<b>MADNESS IN VALENCIA</b>	Erifilia	Annie Tyson	Drama Centre
<b>A LITTLE HOTEL ON THE SIDE</b>	Violette	Lindsay Posner & Cal McCrystal	Theatre Royal Bath
<b>PARADISE LOST</b>	Libby	Aoife Smyth	Drama Centre

Production	Character	Director	Company
<b>THE CHERRY ORCHARD</b>	Anya	Tim Robins	Drama Centre
<b>ROSE BERND</b>	Marthel	Jonathan Martin	Drama Centre
<b>PYGMALION</b>	Eliza	Brigid Zengeni	Drama Centre
<b>AS YOU LIKE IT</b>	Celia	Fiona Laird	NYT REP Company
<b>BLACK AND WHITE</b>	Tash	Paul Roseby	NYT REP Company
<b>SKETCHING</b>	Katie	Tom Hescott	NYT REP Company
<b>TO AVOID PRECIPICE CLING TO ROCK</b>	Frieda	Richard Fredman	Babolin Theatre
<b>ROMEO &amp; JULIET (extracts)</b>	Juliet	David Weston	National Youth Theatre
<b>RELISH</b>	Emma Soyer	Paul Roseby	National Youth Theatre
<b>HAMLET</b>	Gertrude	Robert Thorburn	Young Actors Company

## Film

Production	Character	Director	Company
<b>MAGPIE</b>	Lily	Carmel Hannant	Paul Cook Film
<b>NO MORE KINGS (Short)</b>	Sigrid	Roger Nsengiyumva	
<b>ARCADE (Short)</b>	Pandora	Nida Manzoor	BM Producitons/BFI

## Other

Production	Character	Director	Company
<b>TEAM WELCOMING CEREMONIES - LONDON 2012 OLYMPIC GAMES</b>	Queen of Ceremonies	Paul Roseby	National Youth Theatre/LOCOG

## Additional information

### Skills

Singing - Soprano, Chorus and Solo singing

Accents - RP, Liverpool, Northern Ireland, Yorkshire, General American