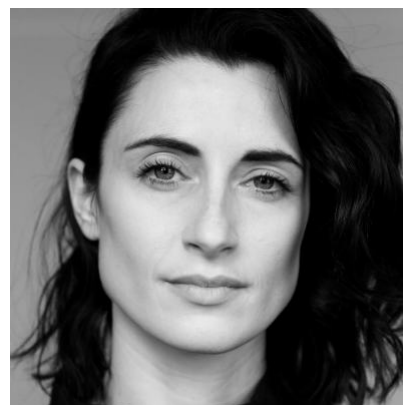


Natasha O'Keeffe

Actor

Natasha trained at the Royal Welsh College of Music and Drama.

[Showreel](#)



Agents

Lucia Pallaris

lpallaris@unitedagents.co.uk

+44 (0) 20 3214 0909

Associate Agent

Eleanor Kirby

ElKirby@unitedagents.co.uk

Roles

Television

Production	Character	Director	Company
WHEEL OF TIME (Series 2)		Rafe Judkins	Amazon
INTERGALACTIC	Emma Grieves	Kieron Hawkes China Moo-Young	SKY
PEAKY BLINDERS Series 5	Lizzie Shelby	Anthony Byrne	BBC
LETHAL WHITE	Charlotte Ross	Susan Tully	BBC
INTERGALACTIC	Emma	Various	Tiger Aspect/ Sky One
PEAKY BLINDERS Series 4	Lizzie	Tim Mielants	BBC
THE STRIKE SERIES: THE CUCKOO'S CALLING	Charlotte	Michael Keillor Charles Sturridge	BBC
REBELLION II	Agnes	Catherine Morshead	Between State Film Productions
WILL	Ann Shakespeare	Shekhar Kapur Craig Pearce	TNT
PEAKY BLINDERS Series 3	Lizzie	Tim Mielants	BBC
JEKYLL AND HYDE	Fedora	Colin Teague	ITV

Production	Character	Director	Company
BARBARIANS; THE LAST PANTHER	KIRSTY	Johan Renck	Warp Films
SHERLOCK	EMILIA RICOLETTI	Douglas MacKinnon	BBC
GRANTCHESTER	Grace Heath	Tim Fywell	Lovely Day for ITV
PEAKY BLINDERS Series 2	Lizzie	Tom Harper	BBC
LIP SERVICE	Sadie Anderson	Various	Kudos
MISFITS - Series 5	Abby	Various	E4
LAW & ORDER UK - series 4 Ep 6	Connie Moran	Joss Agnew	Kudos
PEAKY BLINDERS	Lizzie Stark	Tom Harper	Tiger Aspect for BBC 2
MISFITS - series 4	Abby	Various	E4
SATISFACTION	Alex	Dusan Lazarevic	Eat Me Productions
LIP SERVICE series 1 and series 2	Sadie	John McKay	BBC3

Film

Production	Character	Director	Company
CLICQUOT	Anne	Thomas Napper	Fourth & Twenty Eight Films
SVENGALI	Natasha	John Hardwick	Root Films
FILTH	Anna	Jon Baird	Steel Mill Pictures

Stage

Production	Character	Director	Company
SPLENDOUR	Micheleine	Tom Daley	RWCMD
KINDERTRANSPORT	Faith	Caroline Leslie	RWCMD
THE IMPORTANCE OF BEING EARNEST	Gwendolen	Martin Houghton	RWCMD
AS YOU LIKE IT	Rosalind	Giles Block	RWCMD

Other

Production	Character	Director	Company
OASIS, FALLING DOWN		W. I. Z	Factory Films